

Alaska Department of Fish and Game

Habitat Section
Southeast Region



186-15-10550

CORRECTION

Water body name: Carson Creek

Quad: Icy Bay D2, D3

Upper Reach Latitude: 59.999576 **Longitude:** -141.522046

Lower Reach Latitude: 59.986410 **Longitude:** -141.514927

Survey date: 7/18/2024

Species & Lifestage: COs

Survey crew: NJ, DK, CD

Findings: We surveyed this cataloged stream with a backpack electrofisher and GPS and found that the stream path is incorrectly mapped. The main flow was directed under the bridge with the help of berm piles; flow continues downstream to the intertidal beach (Table 1; Figures 1–4).

Recommendations: Correct Stream No. 186-15-10550 in the anadromous waters catalog to reflect the field verified stream path and extend stream into the intertidal (Figure 5).

Nomination: Pending

Table 1.–186-15-10550 survey data.

Waypoint	Latitude	Longitude	Notes	Stream Width ft	Stream Substrate	Habitat Features	Gradient %	Sample Effort	Sample Results
612	59.987632	-141.518523	Main channel has been directed under bridge. Upstream has berm piles to help direct it. Bridge itself is in decent shape but erosion looks like a constant issue for abutments. Large boulders help stabilize but evidence of erosion during higher flows.						



Figure 1.–East abutment of Carson Creek bridge.



Figure 2.—West abutment of Carson Creek bridge.



Figure 3.—Berm piles upstream of Carson Creek bridge.



Figure 4.—Downstream, looking towards the intertidal beach.

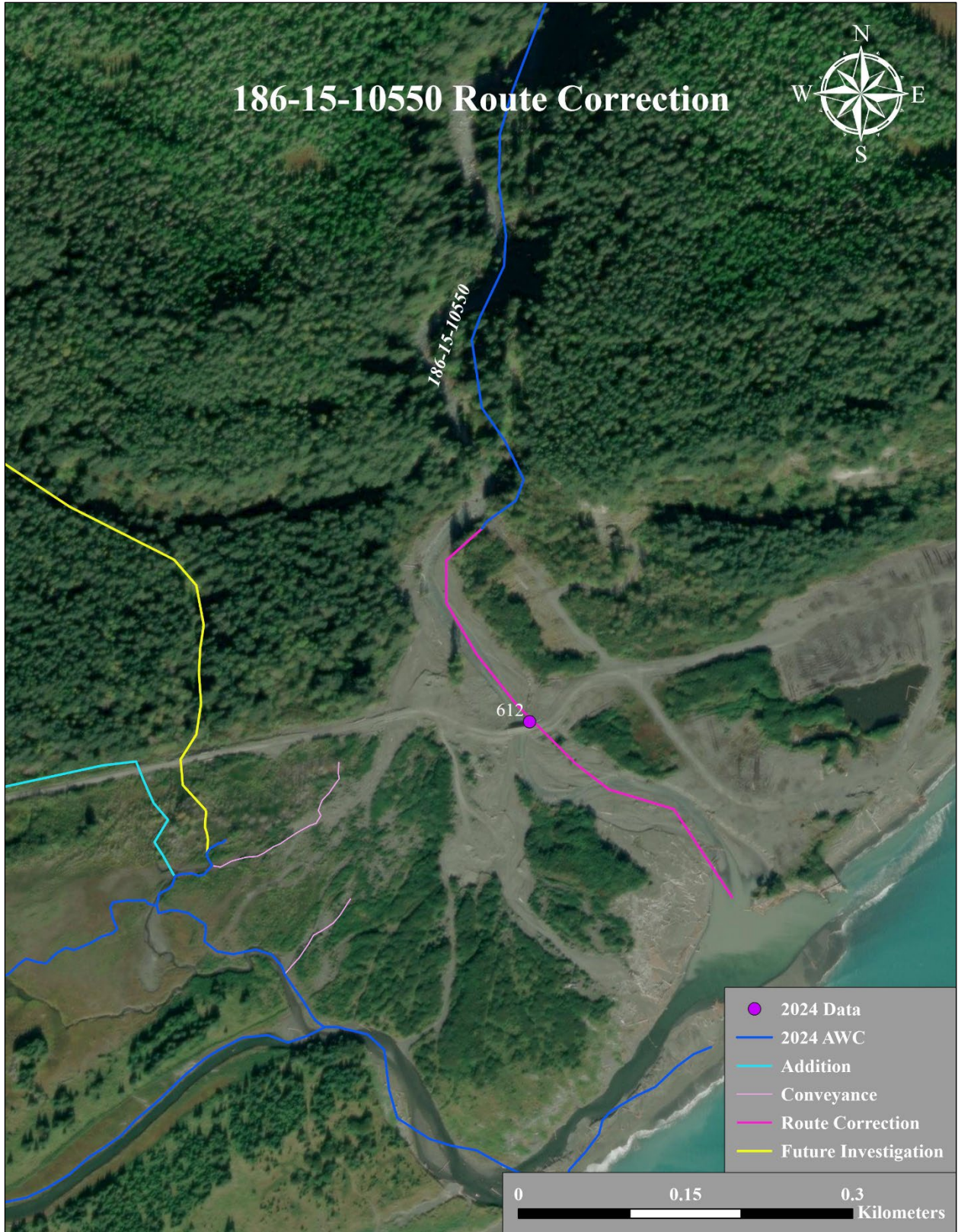


Figure 5.—186-15-10550 route correction map.

